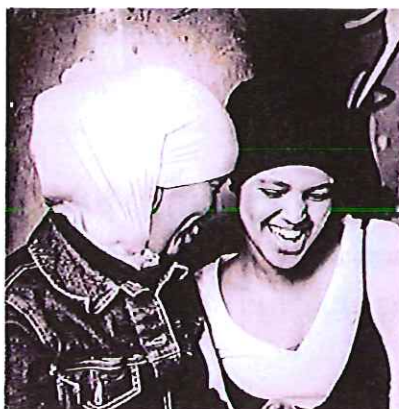


ÄLSKADE BARN MY DARLING CHILD

A study material for parents living in a new country



Migrant parents are interested in learning about the new country

- ÄLSKADE BARN is a study material aimed at migrant fathers and mothers.
- Parents are dedicated and wish for their children to have a good life in Sweden. But it is not always easy to make family life work in new surroundings.
- Studieförbundet/The Study Promotion Association has arranged study circles for migrant parents for many years.

Parents talk about what is important to them

- In our study circles migrant parents have discussed and suggested relevant topics for our new study material ÄLSKADE BARN.
- Some of the chosen topics are: living as a family in Sweden, developing parent - child attachment, balancing teen-age life, dealing with cultural norms and values. But also practical issues like pre-school and school systems, leisure activities and important Swedish laws.
- The children's best interest and children's right to be listened to are guiding principles in the material.

Pedagogical study circles

- ÄLSKADE BARN consists of 18 meetings in 6 study circles.
- It fits everybody and can be used in all municipalities in Sweden.
- The parents can choose one or several study circles. About children or teenagers.
- The methodology in non formal education emphasizes democracy. Every participant's opinion and experience counts.
- ÄLSKADE BARN fits everybody regardless of language competencies. The focus is on illustrations that initiate vivid discussions.

Meeting places – Swedish non formal education

For over a hundred years non formal adult education, as a free and voluntary complement to formal education, has played an important part in building the Swedish society.

The first study circle was formed in early 20th century by people who gathered by own free will and on equal terms in order to increase their knowledge and take united action to influence society.

With its essence of tolerance for different opinions, solidarity and respect for united decisions liberal adult education has been a fundamental democratic force. Today the importance of liberal adult education is broadly acknowledged and partly financed by the state, counties and municipalities.

Non formal adult education is comprised of folk high schools and national study associations based on popular movements and organisations.

Studieförbundet/The Study Promotion Association was founded in 1959 and is one of the largest study associations in Sweden. Studieförbundet is politically and religiously unbound and based on voluntary movements covering subjects on for example environment, outdoor activities, culture and music. An important target group is people living in socially and economically disadvantaged areas.