

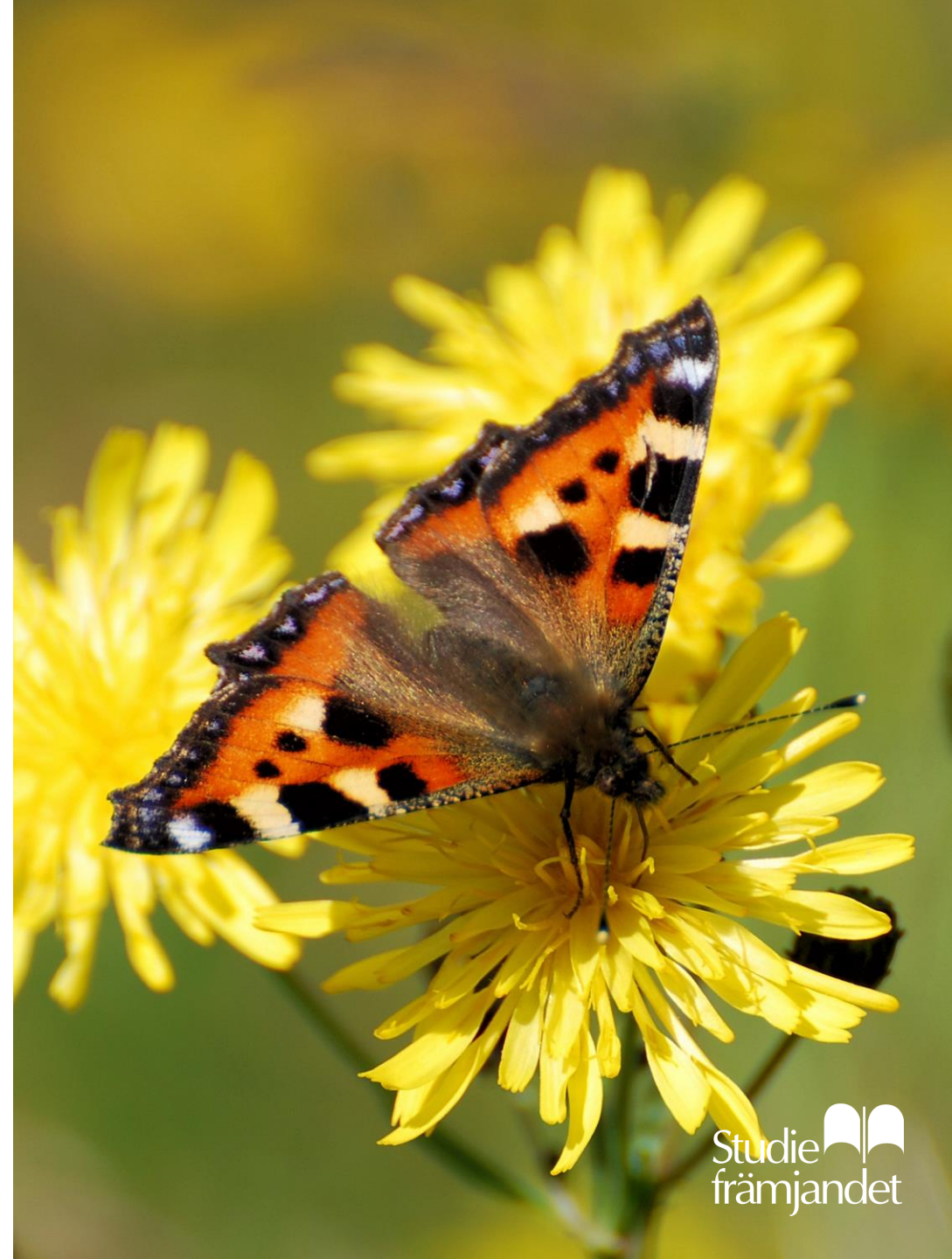


Studiefrämjandet

About us and our report on the local situation

5 facts about Studieförbundet

- One of Sweden's largest adult education associations.
- Approximately 200,000 participants in study circles and courses.
- Politically, union-, and religiously independent.
- Support individuals and NGOs who want to conduct popular adult education activities.
- Studieförbundet's profile is nature, animals, environment and culture (music is the largest area of activity).



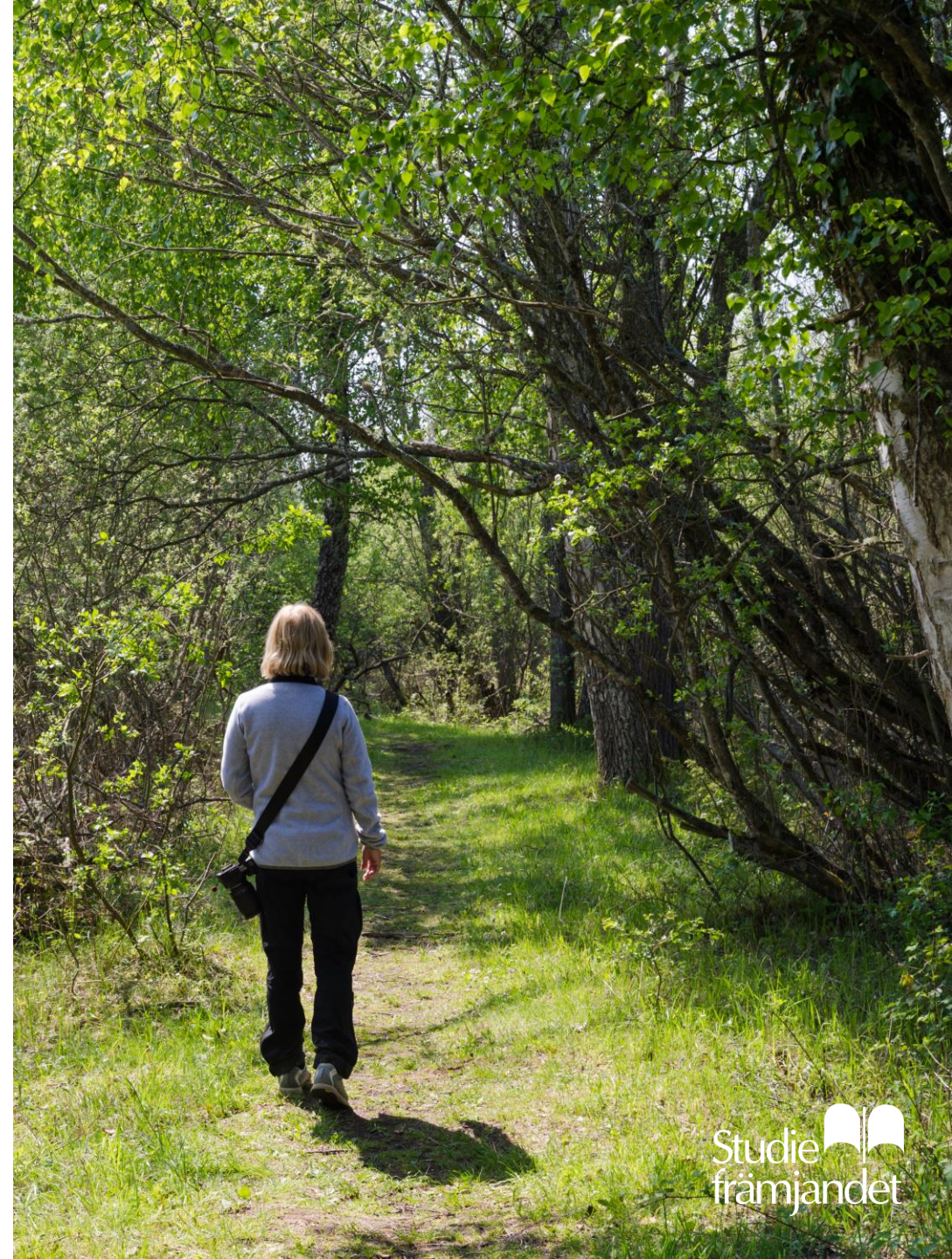
Studiefrämjandet's study circles

- Free learning in a small group.
- Democracy and dialogue - you learn from each other!
- Part of popular adult education (folkbildning).
- 15,000 non-profit circle leaders.
- All study circles must have a study plan that is submitted to Studiefrämjandet.



3 types of activities at Studieförbundet

- Study circles for people over 13 years old.
- Cultural programs that affect up to 2 million people.
- Other popular education activities that attract up to 85,000 participants. Can e.g. be if the participants are younger than 13 y.o.



Studiefrämjandet's organisation 2021



- Studiefrämjandet has 14 branches with 74 offices.
- Each branch is its own legal entity.
- The branches arrange training for study circle leaders.
- The local offices arrange study activities and cultural events.

Member-organisations

- The member organisations form the basis of Studieförbundet.
- Organisations act as members.
- Circle leaders are often recruited from member organisations.
- In cooperation, a common way of working is built.



Studiefrämjandet's 19 member organisations

- Adoption Center
- Outdoor promotion
- The field biologists
- Forest and Youth
- Farmers' Youth Association
- Friends of the Earth
- Colony Garden Association
- The Swedish Society for Nature Conservation
- Home and School
- Sweden's 4H
- Swedish Working Dog Club
- Swedish Hunters' Association
- Swedish Kennel Club
- Swedish Tourist Association
- Swedish Live - Young organiser network
- Swedish Youth with Dogs
- BirdLife Sweden
- The anglers
- Sverok (gaming culture)

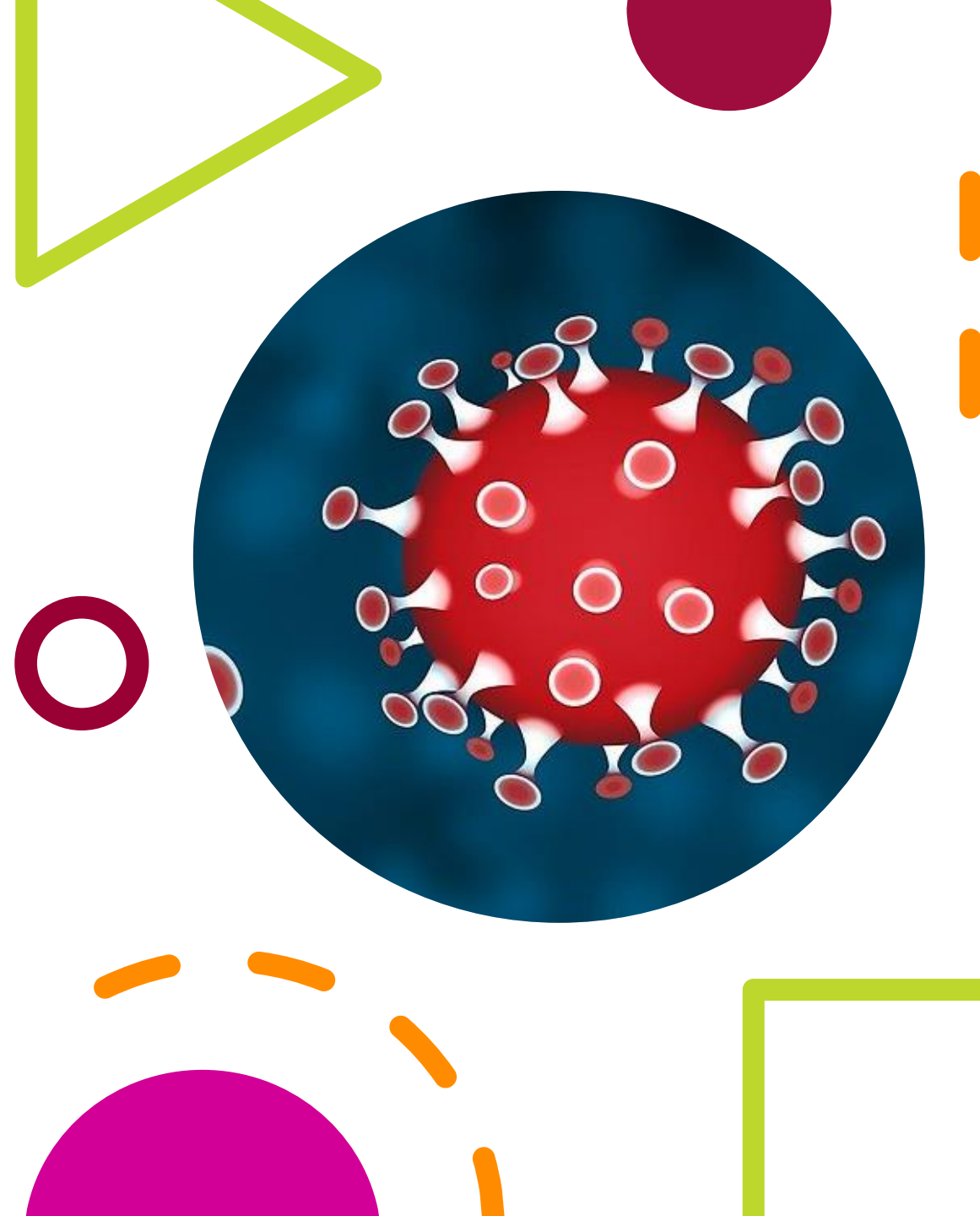
Studiefrämjandet's economy

- Studiefrämjandet has no mission to make profit.
- Financial support comes from the state, county council and municipality.



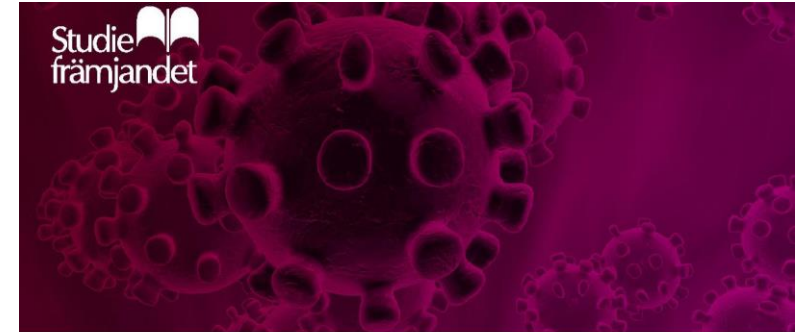
Local situation

- Bans on large gatherings and travel restrictions
- Social distancing
- No lockdown imposed
- 18.12.2020: facemasks in public transport, closure of all non- essential public services (like swimming pools and museums)
- 8.01.2021, a new pandemic law was passed that allows for the use of lockdown measures
- YET already in March 2020 the whole branch of adult education was recommended to work distantly.



How we worked during these times: popular education

- Safety assessment by a representative of the Public Health Agency of Sweden concerning risk groups
- Several directions:
 - Paused
 - Small % open as normal, even for risk groups
 - Switched to digital (for example, our hunting school, Cultural Night event)
 - Educating by post mail (“letter school”)
 - Outdoors activities after 25.11.2020
- Only about 30% volume of popular education activities have been / is being organised comparing to pre-corona time



Skydda dig och andra från spridning av coronaviruset i våra lokaler

Kom ihåg att:

- Tvätta händerna ofta med tvål och varmt vatten (i minst 20 sekunder)
- Hosta och nys i armvecken
- Undvik att röra dig vid öga, näsa och mun
- Håll avstånd (1-2 meter) till andra människor inomhus och utomhus
- Stanna hemma om du känner dig det minsta förkyld för att undvika att smitta andra – framför allt äldre personer och personer i någon riskgrupp.

Vi vill att du väntar minst två dygn efter att du blivit frisk (symptomfri) innan du kommer tillbaka till våra lokaler.

Besök 1177.se och folkhalsomyndigheten.se eller krisinformation.se för mer information och för information på andra språk t.ex. tigrinja, af soomaali och dari.

Symptom på Covid-19

- Feber, hosta och ibland andningspåverkan
- Snuva, halsont, huvudvärk, illamående, muskel- och ledvärk.

De flesta får lindriga besvär men en del blir allvarligt sjuka med exempelvis svårigheter att andas och lunginflammation. Inkubationstiden bedöms vara 2–14 dagar, de flesta insjuknar efter ca 5 dagar.

Besök: studieframjandet.se för mer information om coronaviruset och Studiefrämjandet.

How we worked during these times: other entities

- Other our legal entities switched to distant education even later (Kontakten – since 2021, Konstbruket – only now in April)
- In terms of education volumes worked as normal up till now





Our best practices

- Remained open for risk groups with all possible social distancing pre-cautions
- Education for staff: how to organise meetings and courses digitally. Was at focus at our Annual meeting
- Teaching people with neuropsychiatric disabilities to transfer to digital education
- Educating participants in Zoom
- NGOs: running education via Whatsapp and not PC
- Possibilities to buy digital equipment. Now many things are distant, we even live stream board games.

Where Swedish adult education is heading

Digitalization and digital inclusion is a priority issue for both the EU and local actors

Digitization strategists and digital inclusion managers at some county administrative boards

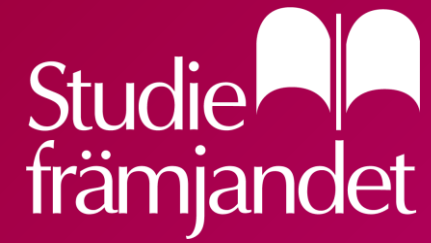
Further development of digital social & community services as part of sustainable development - helping more people take part

Fixing digital divide

Funkify - disability simulator
www.funkify.org (developed in Sweden)

Where Swedish adult education is heading

- Supporting IT industry in developing inclusive digital solutions
 - Developing sustainable strategies for systematic availability in the purchase of digital products and systems, cross-sectorally (Intersectionality - how do we all get involved in digital development?)
 - Working with concerns on e-health, competence center welfare technology in Swedish municipalities and regions (SKR)
- 



Denis Riabov

Project manager

denis.riabov@studieframjandet.se

studieframjandet.se